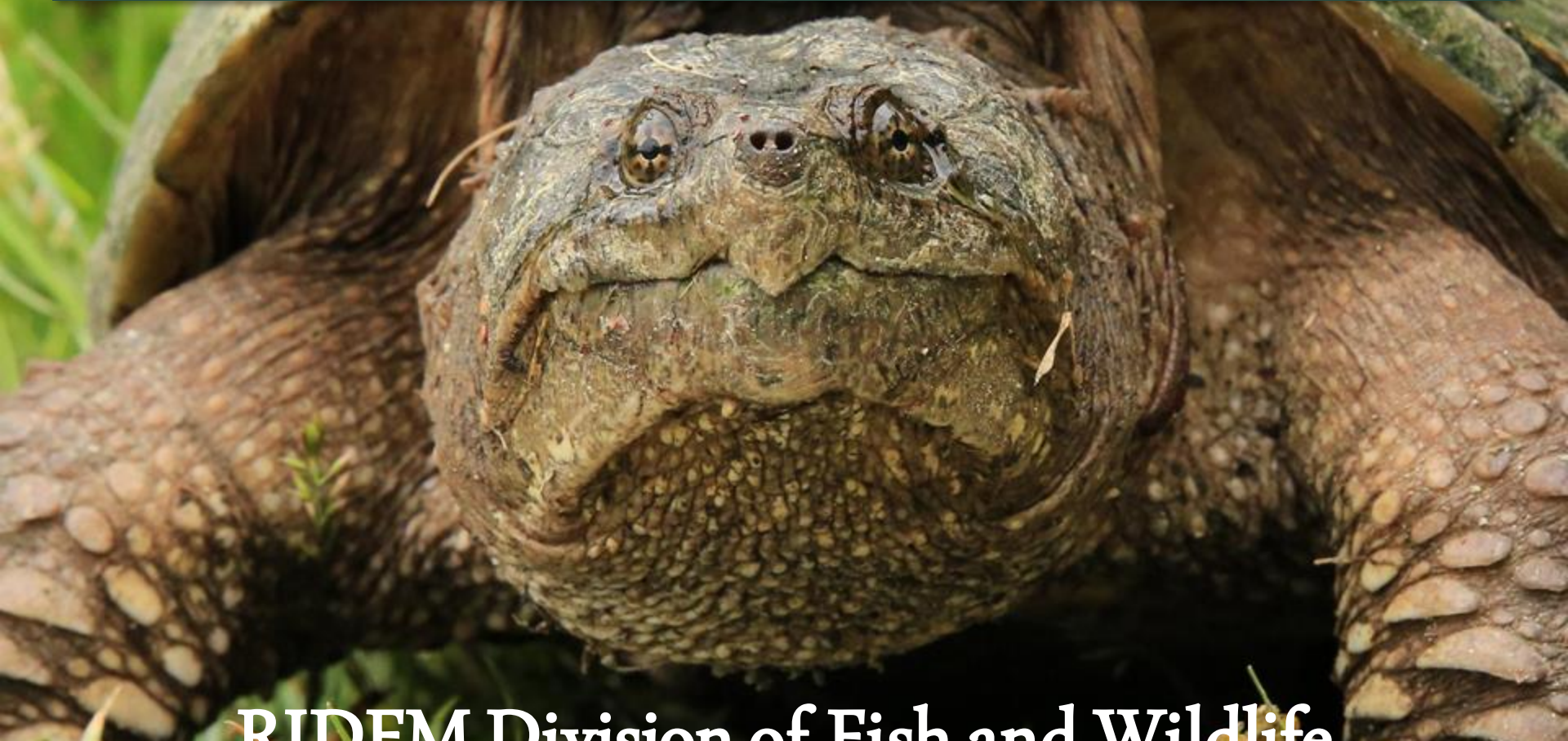


# PADDLING WITH PURPOSE



**BIDEM** Division of Fish and Wildlife

# NATIVE SNAKES OF RHODE ISLAND





# NATIVE TURTLES OF RHODE ISLAND





# REPTILE RUMORS



Winter: Brumate

Spring: Mate

Summer:  
Estivate/young  
born

Fall: Return to  
hibernacula



# NORTHERN DIAMONDBACK TERRAPIN





# CURRENT RESEARCH AND MONITORING

CAN YOU SPOT  
THE TURTLE?



# FROGS AND TOADS OF RHODE ISLAND

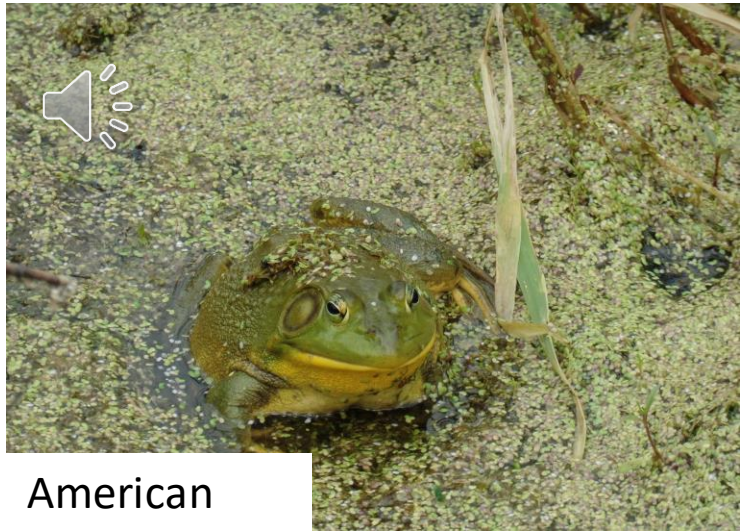




Gray tree  
frog



Green frog



American



American  
toad



Fowler's toad



Eastern



# SALAMANDERS OF RHODE ISLAND



# OPERATION: SPADEFOOT



ZOO & Carousel Village





# THREATS TO RHODY HERPS

## #1 : Habitat Loss and Fragmentation

- Road mortality, Loss of Resources

## Disease

- Ranavirus, Chytrid Fungus, Snake Fungal Disease

## Human Conflict

- Persecution, Illegal Collection, Pollution, Subsidized Predators



# HOW CAN YOU HELP?

## Sanitize Equipment

What to sanitize:

- Anything that touches the water or surrounding soil

When to sanitize:

- When moving between wetlands farther than walking distance

How to sanitize:

1. Scrub with soapy water to remove debris
2. Rinse
3. Spray with 3% bleach solution
4. Wait 5 minutes and rinse or let dry in the sun!





# HOW CAN YOU HELP?

HerpObserver: Community Science Opportunity



[DEM.RI.GOV/HerpObserver](https://DEM.RI.GOV/HerpObserver)

QUESTIONS?

